

**AUTOMOTIVE**  
**PREMIUM VALUE**  
**PROTECTION**

## **ADDITIONAL BENEFITS**

### **24-HOUR ROADSIDE ASSISTANCE:**

In the event your vehicle is disabled during the term of your coverage, Roadside Assistance Service is provided. These services include:

- Towing
- Lost Key / Lock-Out Services
- Other Road Services

### **RENTAL VEHICLE ASSISTANCE:**

In the event of a covered Mechanical Breakdown during the term of your coverage, you will be reimbursed for alternate transportation expenses according to the schedule in your agreement. If repairs are delayed due to parts unavailability, you may be entitled to additional days of alternate transportation.

### **TIRE PROTECTION:**

If the tires on your vehicle are damaged during their normal life by glass, nails or other road hazards, they will be repaired, or replaced if not repairable, by a new tire of like kind and quality.

### **TRIP INTERRUPTION**

You can be reimbursed for meals and lodging up to 3 days if you are stranded because of a covered breakdown more than 100 miles away from your home.

### **NO LIMIT ON CLAIMS**

There is no limit on the number of times you can use your Solid Gold Protection Plan.

### **EASE OF SERVICE**

Repairs may be completed at any licensed repair facility in the United States or Canada.

## GOLD PROTECTION PLAN



### ENGINE

Cylinder block • Cylinder head(s) • Turbocharger/supercharger and their internal components and mounts • Timing gears • Timing/balance shaft chain/belt, guides, tensioners, sprockets and cover • Flywheel/flex-plate • Harmonic balancer • Oil pan • Oil pump • Intake manifold • Exhaust manifold • Valve cover(s) • Wastegate • Engine oil pressure gauge • Radiator • Radiator fan • Electric fan motor • Water pump and pulley • Water pump housing • Belt tensioner • Fan clutch • Fan shroud • Radiator coolant recovery unit • Electric radiator fan motor relay/switch • Electric radiator fan motor sensor • Engine thermostat • Engine coolant temperature gauge • Hot water valve.



### TRANSMISSION AND TRANSFER CASE

Transmission and transaxle cases and their internal components and mounts • Torque converter • Vacuum modulator • Transmission oil cooler • Gear shift lever • Electronic shift control processor • Electronic shift control sensor • Transmission shift linkage • Pan • Four wheel drive actuator • Transfer case and all internal components and mounts.



### DRIVE AXLE

Final drive and axle housings and their internal components • Axles • Axle shafts and bearings • Propeller shafts • Hubs • Constant velocity joints • Universal joints • Center bearings • Yokes • Hub bearings • Locking rings • Differential cover.



### ELECTRICAL

Alternator • Voltage regulator • Ignition coil • Ignition switch • Electronic ignition module • Electronic fuel injection sensors • Electronic fuel injection control units • Electronic ignition distributor • Electronic spark timing control unit • Alternator pulley and mounting bracket • Igniter • Volt/amp gauge • Starter motor • Starter motor drive • Starter motor solenoid • Wiper motors • Manually operated electrical switches • Horn and horn relay • Electric window motors • Electric mirror motors • Cruise control module • Cruise control actuator • Electric door lock relay and actuator • Electric trunk/tailgate/hatchback actuators • Backup light switch • Brake light switch • Door operated courtesy light switches • Neutral safety switch • Power antenna motor • Rear window defogger unit • Rear window defrost grid • Windshield washer pump • Electric power seat motor • Electric convertible top motor • Electric sunroof motor • Electric headlamp motor • Electronic instrument panel control module • Electronic instrument panel display • Engine wiring harness • Electronic traction control sensors and control module • Electronic suspension air compressor • Factory installed theft alarm system • Factory installed remote keyless entry transmitter/receiver • Inclinometer • Cigarette lighter(s) • Auxiliary power point • Illuminated vanity mirrors • Tachometer • Trip/mileage computer • Headlamp dimmer switch • Map lights • Clock.



### BRAKE

Master cylinder • Power brake assist boosters • Combination valve • Backing plate assembly • Brake pedal assembly • Accumulator • Parking brake pedal • Parking brake cable • Parking brake release mechanism • Self adjusters • ABS booster pump • ABS control processor • ABS control sensors • ABS control solenoids • ABS modulator valve • ABS valve and accumulator • Brake calipers • Wheel cylinders • Brake lines and fittings.



### SUSPENSION

Wheel bearings • Sway bar and its bushings and linkage • Upper and lower control arms • Control arm shafts and bushings • Upper and lower ball joints • Radius arm and bushing • Stabilizer bar, links and bushings • Strut bar • Spindle and support • Strut bearings and bushings • Air suspension compressor • Suspension control computer • Suspension control solenoids • Height sensor • Mode selector switch.



### FUEL SYSTEM

Fuel tank • Fuel pump • Fuel injection pump • Diesel fuel injectors • Gasoline fuel injectors (for electrical failure only) • Accelerator pedal • Fuel pressure regulator • Fuel level sending unit • Accelerator pedal linkage • Fuel pressure sensor • Fuel pump relay • Fuel shutoff control • Fuel tank filler pipe • Metal fuel lines • Fuel gauge • Vacuum pump.



### STEERING

Gear housing/rack assembly and their internal components • Control valve and cylinder • Power cylinder assembly • Steering column shaft(s) and their couplings/bearings • Steering knuckle • Power steering pump, pulley, and mounting bracket • Dampener • Pitman arm • Tie rods • Tie rod ends • Idler arm • Drag link • Steering column bearings • Steering wheel • Tilt wheel mechanism • Rear wheel steering control valve and sensor • Rear wheel steering control unit • Rear wheel steering shaft and couplings • Rear wheel steering power cylinder(s) • Rear wheel steering oil pump • Rear wheel steering stepper motor • Rear wheel steering rack assembly.



### AIR CONDITIONING

Compressor • Accumulator/drier only in conjunction with compressor replacement • Condenser • Evaporator • Compressor clutch and coil • Compressor pulley and mounting bracket • Expansion valve • Orifice tube • Pressure switches • Idler pulley and bearing • Manual temperature control selector head • Automatic temperature control selector head • Blower motor • Heater control valve • Air ducts • Air registers • Control cables • Power module • Plenum doors • Vacuum motors • Idler pulley tensioner • Heater core.



### AUDIO CENTER

Factory installed entertainment chassis modules including: Radio • CD player • Magnetic tape player • Graphic equalizer. (Limited to repair only, not replacement)



### HARDWARE

Ashtrays • Door handles • Door latches • Door locks • Door hinges • Hood latch release mechanism • Hood struts • Hood hinges • Hood torsion bars • Ignition switch lock cylinder • Rear hatch struts • Seat tracks • Deck lid latch/release • Deck lid hinges • Deck lid torsion bars • Power seat transmission • Window crank handles • Window regulators • Wiper motor transmission • Altimeter • Compass • Glove box lock and latch.

Seals and gaskets are included for all Gold Plan covered components. Fluids and filters are included in conjunction with a covered repair.

This brochure is intended to outline the main features of your Premium Value Protection Plan for New and Used Vehicles. Refer to the Agreement for conditions of coverage, exclusions and your duties during the term of the Plan.

# SILVER PROTECTION PLAN



## ENGINE

Cylinder block • Cylinder head(s) • Turbocharger/supercharger and their internal components and mounts • Timing gears • Timing/balance shaft chain/belt, guides, tensioners, sprockets and cover • Flywheel/flex-plate • Harmonic balancer • Oil pan • Oil pump • Intake manifold • Valve cover(s) • Wastegate • Engine oil pressure gauge • Radiator fan motor • Water pump and pulley • Fan clutch • Fan shroud • Radiator coolant recovery unit • Electric radiator fan motor relay/switch • Electric radiator fan motor sensor • Engine coolant temperature gauge.



## TRANSMISSION AND TRANSFER CASE

Transmission and transaxle cases and their internal components and mounts • Torque converter • Vacuum modulator • Transmission oil cooler • Gear shift lever • Transmission shift linkage • Pan • Transfer case and all internal components and mounts.



## DRIVE AXLE

Final drive and axle housings and their internal components • Axles • Axle shafts and bearings • Propeller shafts • Hubs • Constant velocity joints • Universal joints • Center bearings • Yokes • Hub bearings • Locking rings.



## SUSPENSION

Wheel bearings • Sway bar and its bushings and linkage • Upper and lower control arms • Control arm shafts and bushings • Upper and lower ball joints • Strut bar • Spindle and support.



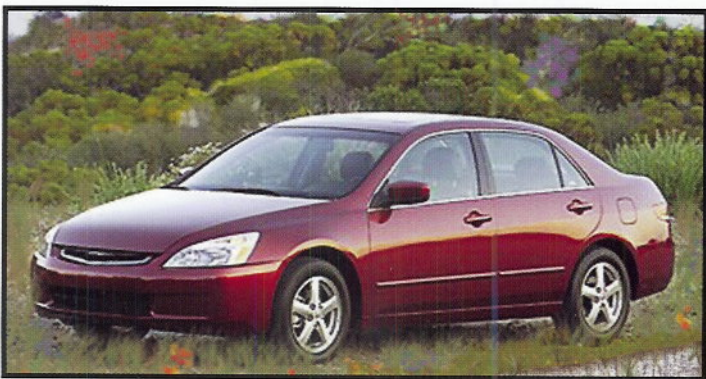
## STEERING

Gear housing/rack assembly and their internal components • Control valve and cylinder • Power cylinder assembly • Steering column shaft(s) and their couplings/bearings • Steering knuckle • Power steering pump, pulley, and mounting bracket • Pitman arm • Idler arm • Drag link • Steering column bearings.



## BRAKE

Master cylinder • Power brake assist boosters • Backing plate assembly • Brake pedal assembly • Parking brake pedal • Parking brake cable • Parking brake release mechanism • Self adjusters • Brake lines and fittings.



## ELECTRICAL

Alternator • Voltage regulator • Ignition coil • Electronic ignition module • Electronic ignition distributor • Throttle position sensor • Fuel control temperature sensor • Idle control actuator • Manifold vacuum sensor • Crankshaft position sensor • Camshaft position sensor • Alternator pulley and mounting bracket • Igniter • Volt/amp gauge • Starter motor • Starter motor drive • Starter motor solenoid • Wiper motors • Manually operated electrical switches • Horn and horn relay • Electric window motors • Electric mirror motors • Cruise control module • Cruise control actuator • Electric door lock relay and actuator • Electric trunk/tailgate/hatchback actuators • Backup light switch • Brake light switch • Door operated courtesy light switches • Neutral safety switch • Windshield washer pump • Cigarette lighter(s) • Auxiliary power point • Tachometer • Headlamp dimmer switch • Map lights • Clock.



## FUEL SYSTEM

Fuel tank • Fuel pump • Accelerator pedal • Fuel pressure regulator • Fuel level sending unit • Accelerator pedal linkage • Fuel pressure sensor • Fuel pump relay • Fuel shutoff control • Fuel tank filler pipe • Metal fuel lines • Fuel gauge.



## AIR CONDITIONING

Compressor • Accumulator/drier only in conjunction with compressor replacement • Condenser • Evaporator • Compressor clutch and coil • Compressor pulley and mounting bracket • Expansion valve • Orifice tube • Idler pulley and bearing • Manual temperature control selector head • Blower motor • Heater control

Seals and gaskets are included for all Silver Plan covered components. Fluids and filters are included in conjunction with a covered repair.

# BRONZE PROTECTION PLAN



## ENGINE

Cylinder block • Cylinder head(s) • Turbocharger/supercharger and their internal components and mounts • Timing gears • Timing/balance shaft chain/belt, guides, tensioners, sprockets and cover • Flywheel/flex-plate • Harmonic balancer • Oil pan • Oil pump • Intake manifold • Valve cover(s) • Wastegate.



## TRANSMISSION AND TRANSFER CASE

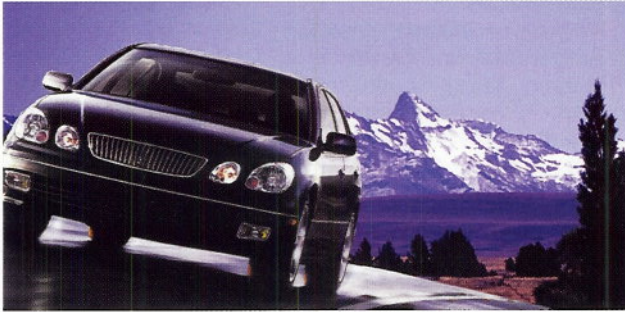
Transmission and transaxle cases and their internal components and mounts • Torque converter • Vacuum modulator • Transmission oil cooler • Gear shift lever • Transmission shift linkage • Pan • Transfer case and all internal components and mounts.



## DRIVE AXLE

Final drive and axle housings and their internal components • Axles • Axle shafts and bearings • Propeller shafts • Hubs • Constant velocity joints • Universal joints • Center bearings • Yokes • Hub bearings • Locking rings

Fluids and filters are included in conjunction with a covered repair.



## Platinum Protection Plan

The Platinum Protection Plan extends coverage to virtually all mechanical and electrical components of your vehicle unless the part is specifically listed as "not covered." Examples of parts not covered are:

Audio speakers, Batteries, Body panels, Body seals, Bumpers, Cables, Carpeting, Chassis, Clamps, Fasteners, Convertible tops and their mechanisms, Exhaust and emission system components, Gasoline fuel injectors that do not have an electrical failure, Glass, Insulation, Hoses, Lines and fittings (except brake lines and fittings), Mirrors, Manual clutch components, Paint, Passenger restraint system, Seats, Secondary ignition components, Soft trim/moldings or appearance items, Suspension springs, Telephones, Torsion bars, Upholstery, Weather stripping, Wheel lug nuts/studs, Wheels, Wheel covers, Internet computer, Navigation system, Video components, Heads-up display and Night vision systems.

Also specifically excluded are normal maintenance and service items, alignments, adjustments, fuses, lights/bulbs/lenses, accessory drive belts, brake pads and shoes, brake drums and rotors, shock absorbers, struts and any component not supplied as original equipment by the vehicle manufacturer.

## Your Service Contract Provides the Following Features and Benefits!

- **Nationwide Protection.**
- **Available on Both New and Pre-Owned Vehicles.**
- **24-Hour Roadside Assistance for the term of your coverage.**
- **Rental Vehicle Assistance.**
- **Tire Road Hazard Protection and Trip Interruption for the term of your coverage.**
- **Transferable Coverage if you sell your vehicle before your agreement expires.**
- **Fully Insured Program.**
- **Direct Payment To Repair Facility.**
- **One Deductible Per Visit.**
- **Increased Resale Value.**
- **Our claims adjusters are certified by the National Institute for Automotive Service Excellence.**

**Claims Authorization Number  
800-654-8455**

Premium Value Protection Plans Are Issued by:  
Mercury Select Management Company, Inc.  
A member of the Mercury Insurance Group



P.O. Box 268866  
Oklahoma City, OK 73126-8866